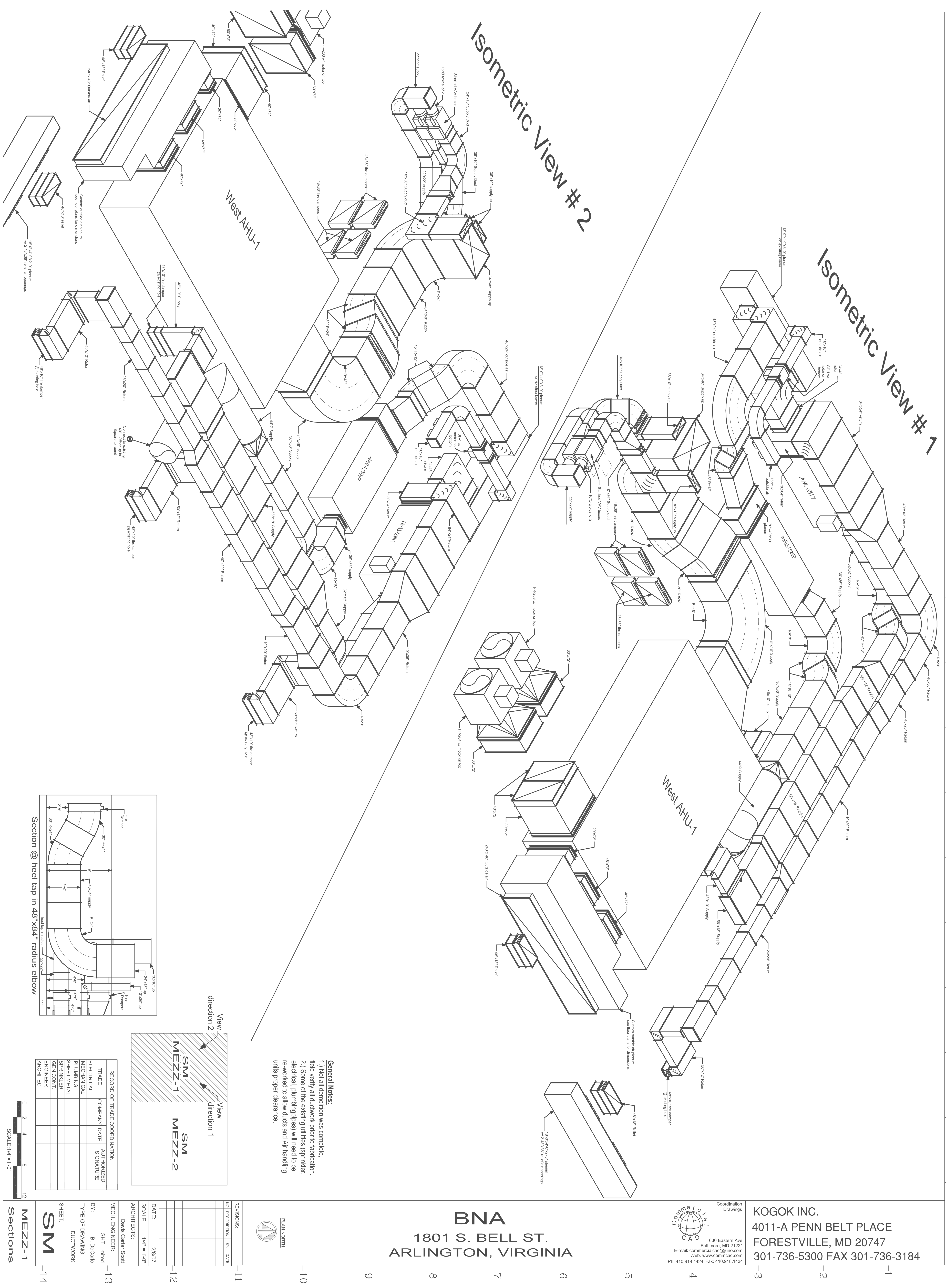


A B C D E F G H J K L M N P Q R S T U



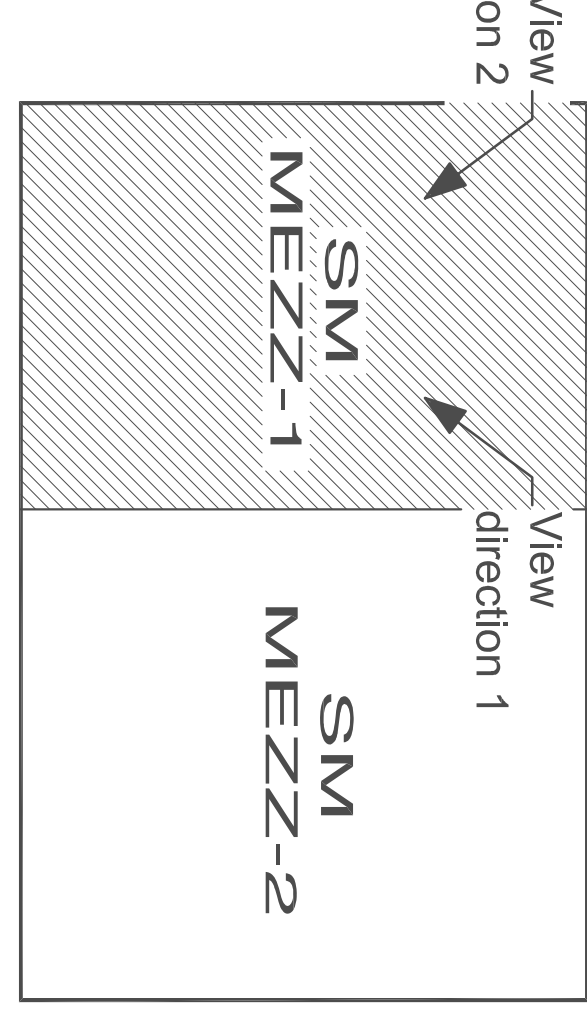
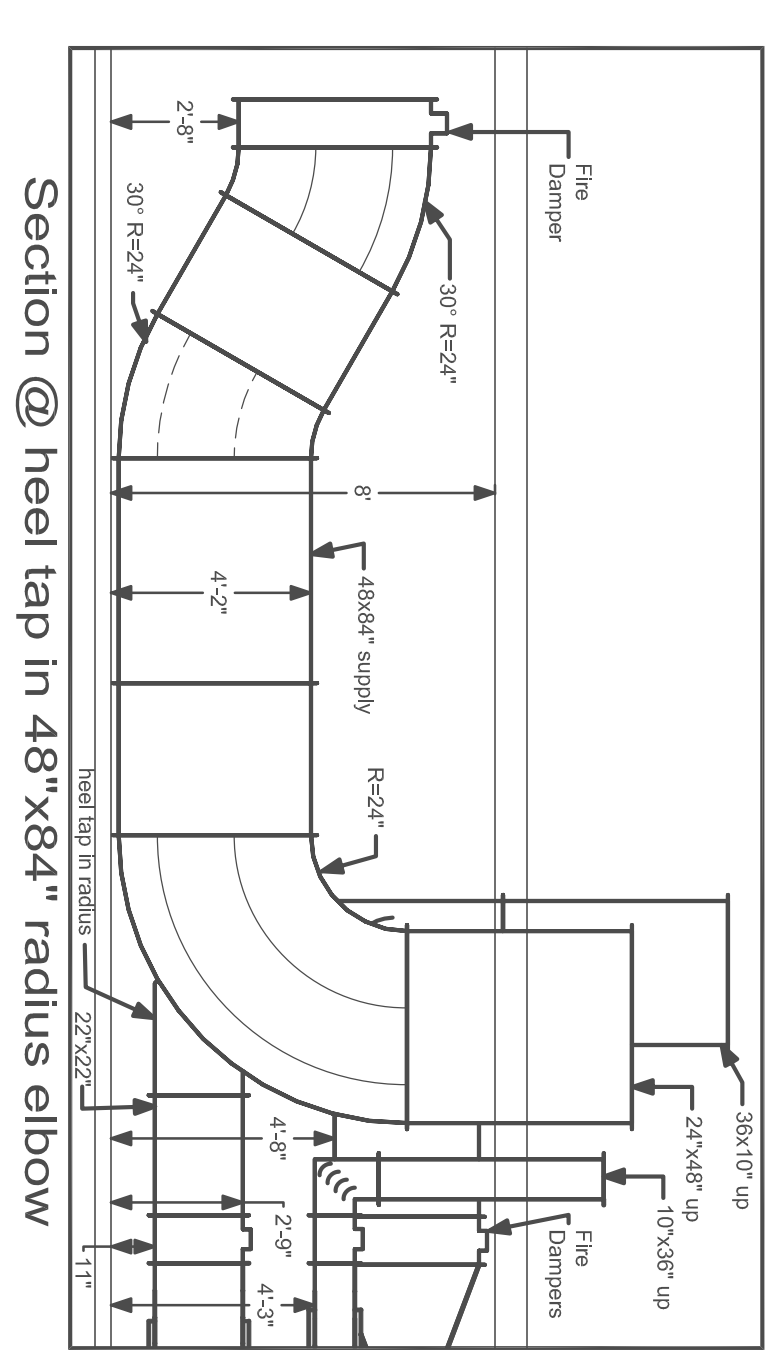
Isometric View # 2

Isometric View # 1

West AHU-1

West AHU-1

**General Notes:**  
 1.) Not all demolition was complete. field verify all ductwork prior to fabrication.  
 2.) Some of the existing utilities (sprinkler, electrical, plumbing/pipes) will need to be re-worked to allow ducts and Air handling units proper clearance.



RECORD OF TRADE COORDINATION	AUTHORIZED SIGNATURE
TRADE	COMPANY/ DATE
ELECTRICAL	
PUMPING	
SHEET METAL	
SPRINKLER	
GEN CONT.	
ENGINEER	
ARCHITECT	

MECH. ENGINEER: GHT Limited  
 ARCHITECTS: David Carter Scott  
 DATE: 2/8/07  
 SCALE: 1/4" = 1'-0"

**BNA**  
 1801 S. BELL ST.  
 ARLINGTON, VIRGINIA



**KOGOK INC.**  
 4011-A PENN BELT PLACE  
 FORESTVILLE, MD 20747  
 301-736-5300 FAX 301-736-3184

MEZZ-1  
 SM  
 SHEET: 14  
 SCALE: 1/4"=1'-0"

REVISIONS:	NO.	DESCRIPTION	BY:	DATE